



LTE CELLULAR  
EXTENDER  
FOR BUSINESS  
CONTINUITY



# DIGI 6300-CX

Improve business continuity with Digi LTE cellular extenders

The Digi® 6300-CX LTE cellular extender can help eliminate downtime by functioning as either the primary or backup cellular connection. It comes with a carrier-certified embedded cellular modem, for both 3G and 4G LTE with EV-DO fallback. Compatible with any dual-WAN networking appliance, this compact high-performance device achieves more reliable connectivity with your existing equipment.

Deployments are streamlined due to the installation accessories – a disposable battery pack for site survey, PoE injector for optimizing placement for best cellular reception, a mounting bracket -- everything you need for a quick and

easy install. Ensure maximum uptime and performance with the flexibility to deploy solutions wherever you need connectivity at a lower cost than traditional Internet connections.

The Digi centralized management platform provides easy setup, configuration and support for installations of Digi and third-party devices. Digi Remote Manager® and aView™ offer web-based device management solutions to securely monitor and control Digi enterprise routers and gateways -- and the health of your network -- after deployment.

## FEATURES AND BENEFITS

- LTE certified embedded cellular modem
- LTE with EV-DO fallback
- Low cost connectivity to any Ethernet device
- Battery pack for site survey to identify optimal mounting location
- Remote mounting kit for quick and easy installation
- Automatic cellular carrier detection with Carrier Smart Select
- Zero-touch provisioning with cloud management
- Compact size (4.3 x 4.3 x 1 inches)

## INCLUDED COMPONENTS



Antennas



Power Supply



Temporary  
Battery

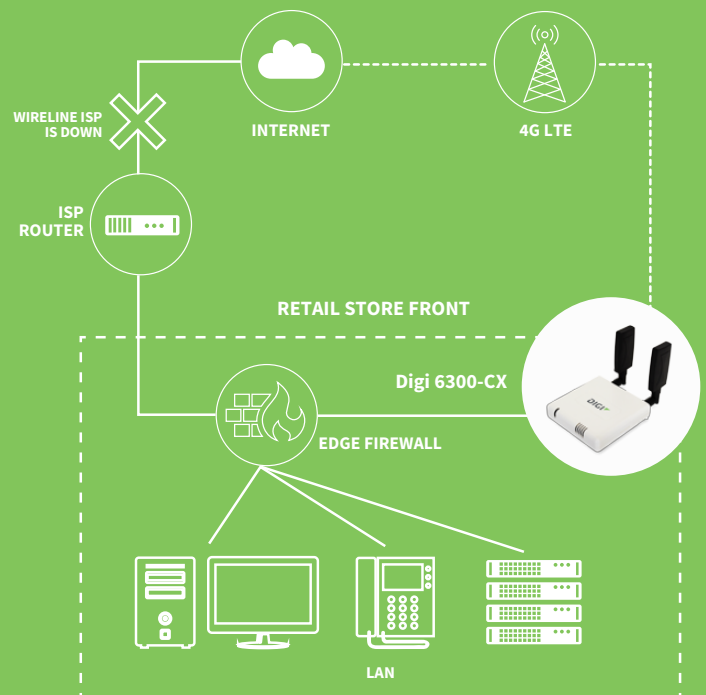


Ethernet Cable



PoE Injector  
Cable

## APPLICATION EXAMPLE



## SPECIFICATIONS

## DIGI 6300-CX

### SOFTWARE

**REMOTE MANAGEMENT** Digi aView™ (cloud based); SNMP v1/v2/v3 (support for Digi Remote Manager® 1Q2019)

**PROTOCOLS** RIP, RIPng, OSPFv2, OSPFv3, BGP, Babel, IS-IS

**SECURITY** AES, 3DES, IKEv1, OpenVPN, MODECFG, X509, SHA1, DES, MD5, RADIUS, TACACS+

### PHYSICAL

**DIMENSIONS (L x W x H)** 4.3 in x 4.3 in x 1.0 in (109 mm x 109 mm x 25 mm)

**WEIGHT** 7.5 oz. (0.21 kg)

**STATUS LEDs** (1) Power on / cell type, (5) Signal cellular strength

### POWER REQUIREMENTS

**POWER SUPPLY** 15V DC, 800mA; 100-240 AC

**OTHER** Remote mounting kit, PoE injector and disposable battery for site survey

### ENVIRONMENTAL

**OPERATING TEMPERATURE** 0° C to 40° C (32° F to 104° F)

**STORAGE TEMP AND HUMIDITY** -13° F to 167° F (-25° C to 75° C); 5% to 95% non-condensing

### APPROVALS

**EMISSIONS / IMMUNITY** FCC Part 15, Subpart B, Class B; CE, C-Tick/RCM; CAN ICES-3(B)/NMB-3(B)

### CELLULAR SPECIFICATIONS

**CELLULAR TYPE** 6300-CX02 / 6300-CX03: CAT 3 LTE, EVDO, HSPA+, EDGE, GPRS and GSM; Digi 6300-CX05: CAT 6 LTE-A

**CELL ANTENNA** (2) Dipole; Frequency: 700-960/1575-2700 hz; Gain: 1-4 dBi

**SIM** (1) SIM card slot (size 2FF)

**CELLULAR CERTIFICATIONS** PTCRB, Verizon, AT&T, Bell Canada, T-Mobile (North American SKUs); GCF (EU SKU); Telstra (AU / NZ)

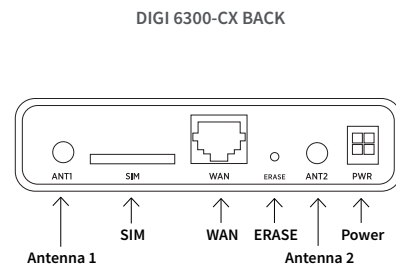
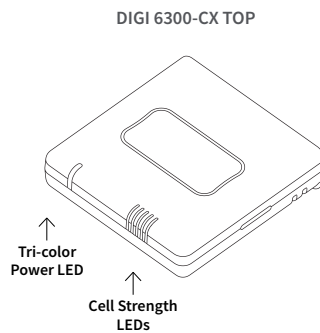
### INTERFACES

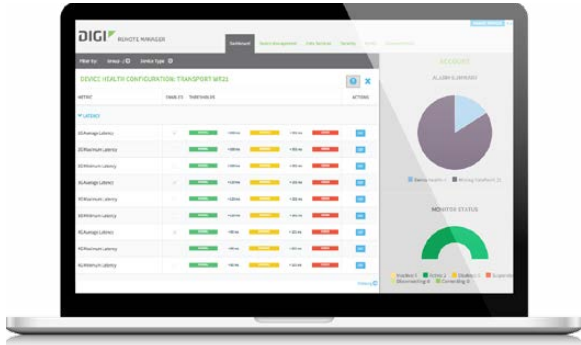
**ETHERNET PORTS** (1) 10/100 Base-T Ethernet port

### WARRANTY

**PRODUCT WARRANTY** 3 years

## PRODUCT IMAGES





**CAPABILITIES**

- Centralized management of remote devices over 3G/4G/LTE
- Define standard configurations and automatically monitor individual devices for PCI security compliance
- Report and alert on performance statistics, including connection history, signal quality, latency, data usage and packet loss
- No servers or applications to operate and maintain
- Complete tasks for your entire device network in minutes
- Edit configurations and update firmware for your individual devices or groups
- Monitor the status and location of your remote device via a web browser
- Active or deactivate cellular lines and monitor data to ensure you never incur overage charges

**INFRASTRUCTURE**

- Hosted in a commercial-grade SAS 70-certified environment
- Superior availability, operating to 99.9% or greater
- Open APIs available to support application development

**SECURITY**

- Certified SSAE-16 facilities
- Over 175 Security Controls in place to protect your data
- Enables compliance with security frameworks like PCI, HIPAA, NIST and more
- Earned SkyHigh's Cloud Trust Program highest ranking of Enterprise-Ready

PART NUMBERS	DIGI 6300-CX
ASB-6300-CX01-OUS	Digi 6300-CX LTE cellular extender: LTE / HSPA+ / EV-DO; Cellular certifications: Verizon, AT&T, Sprint, T-Mobile, PTCRB; US power supply
ASB-6300-CX03-GLB	Digi 6300-CX LTE cellular extender: LTE / HSPA+; Certified countries / regions: European Union, European Economic Area, Switzerland and South Africa; Global power supply with AU, Euro, UK and US interchangeable plug tips
ASB-6300-CX05-GLB	Digi 6300-CX LTE cellular extender: LTE-A; Certified countries: Australia and New Zealand

PART NUMBERS	COMPONENTS
170012	(1) Cellular antenna (black) for Digi 5400-RM, 6300-CX, 6310-DX, 633x-MX, 635x-SR and AT&T VPN devices (replacement part)
560069	Digi 6300-CX temporary site survey battery pack, 9V with 6" power lead, 4 PIN Molex connector (replacement part)
170011	(1) Antenna extender: 48 mm circle antenna magnetic base (base connector: SMA jack; Cable: Low loss CLF; Length: 50 cm with SMA plug (optional))
450052	Digi 6300-CX power supply unit (PSU), 15V DC, THIS PSU WILL HARM A 5400-RM, MPN B113-150080-I*, PSU 800mA SMPS wallmount 4PIN MOLEX CONNECTOR UNIVERSAL with USA plug option fitted**. White box 96 mm x 44 mm x 65 mm (replacement part)

\*For Digi 6300-CX only  
 \*\*15VDC

FOR MORE INFORMATION  
PLEASE VISIT [WWW.DIGI.COM](http://WWW.DIGI.COM)

**DIGI SERVICE AND SUPPORT** / You can purchase with confidence knowing that Digi is always available to serve you with expert technical support and our industry leading warranty. For detailed information visit [www.digi.com/support](http://www.digi.com/support).

© 1996-2018 Digi International Inc. All rights reserved.  
 All trademarks are the property of their respective owners.

**DIGI INTERNATIONAL WORLDWIDE HQ**  
 877-912-3444 / 952-912-3444 / [www.digi.com](http://www.digi.com)

**DIGI INTERNATIONAL JAPAN**  
 +81-3-5428-0261 / [www.digi-intl.co.jp](http://www.digi-intl.co.jp)

**DIGI INTERNATIONAL GERMANY**  
 +49-89-540-428-0

**DIGI INTERNATIONAL SINGAPORE**  
 +65-6213-5380

**DIGI INTERNATIONAL CHINA**  
 +86-21-50492199 / [www.digi.com.cn](http://www.digi.com.cn)

